

# OREGON NORTHERN BASIN & RANGE ECOREGION

## G1 and G2 Species Habitat Management Guidelines

### INTRODUCTION

The Sustainable Forestry Initiative® (SFI) [2022 Standards](#) include requirements that promote and conserve Forests with Exceptional Conservation Value (FECV), which includes critically imperiled (G1) and imperiled (G2) species. This fact sheet summarizes the analysis of FECV habitat within this ecoregion and provides habitat management recommendations that would benefit species potentially found here.

### HABITAT TYPES

- Bare ground
- Juniper Woodlands
- Mixed Conifer Forest
- River/Riparian
- Rocky Outcropping

### BARE GROUND MANAGEMENT

- Protect known locations
- Maintain areas of bare ground
- Retain or plant forage species for pollinators

### JUNIPER WOODLANDS MANAGEMENT

- Protect known locations

### MIXED CONIFER FOREST MANAGEMENT

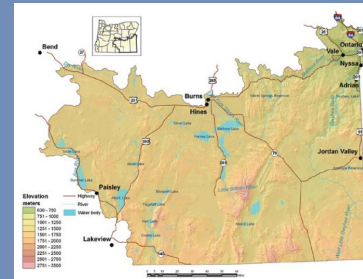
- Protect known locations
- Retain legacy trees, stumps, and logs
- Retain large diameter trees with cavities or broken tops
- Leave skips and gaps with dense shrub component
- Retain large slash into piles

### RIVER/RIPARIAN MANAGEMENT

- Protect known locations
- Maintain well vegetated riparian buffers
- Plant a diversity of both hardwood and conifer trees in the riparian zone
- Retain large diameter trees near streams and rivers
- Buffer wetlands, springs, and headwater areas

### ROCKY OUTCROPPING MANAGEMENT

- Protect known locations
- Buffer rocky outcroppings



**Northern Basin & Range  
Ecoregion**



**A miner bee**



**Grimy ivesea**

*All management recommendations assume that operators and land managers are following all applicable BMPs, laws, and regulations.*

# OREGON NORTHERN BASIN & RANGE ECOREGION

## G1 and G2 Species Habitat Management Guidelines



SCIENTIFIC NAME	COMMON NAME	HABITAT	Status
<i>Andrena winnemuccana</i>	<a href="#">A miner bee</a>	Bare ground	G1
<i>Pronotocrepis clavicornis</i>	<a href="#">Thick-antennaed plant bug</a>	Bare ground	G2
<i>Lomatium bentonitum</i>	<a href="#">Bentonite biscuitroot</a>	Juniper Woodlands	G1G2
<i>Eriogonum cusickii</i>	<a href="#">Cusick's eriogonum</a>	Mixed Conifer Forest	G2
<i>Allium tribracteatum</i>	<a href="#">Three-leaved onion</a>	Mixed Conifer Forest	G2
<i>Taylorconcha insperata</i>	<a href="#">A freshwater snail</a>	River/Riparian	G1
<i>Siphateles boraxobius</i>	<a href="#">Borax Lake chub</a>	River/Riparian	G1
<i>Planorbella oregonensis</i>	<a href="#">Borax Lake ramshorn (snail)</a>	River/Riparian	G1
<i>Helisoma newberryi</i>	<a href="#">Great Basin ramshorn</a>	River/Riparian	G1
<i>Colligyrus depressus</i>	<a href="#">Harney Basin duskysnail</a>	River/Riparian	G1
<i>Petrophysa sp. 1</i>	<a href="#">Hotspring physa (snail)</a>	River/Riparian	G1
<i>Fluminicola sp. 9</i>	<a href="#">Malheur pebblesnail</a>	River/Riparian	G1
<i>Pyrgulopsis fresti</i>	<a href="#">Owyhee hot springsnail</a>	River/Riparian	G1
<i>Pyrgulopsis owyheensis</i>	<a href="#">A springsnail</a>	River/Riparian	G1G2
<i>Pyrgulopsis intermedia</i>	<a href="#">Crooked Creek springsnail</a>	River/Riparian	G1G2
<i>Dumontia oregonensis</i>	<a href="#">A water flea</a>	River/Riparian	G1G3
<i>Siphateles alvordensis</i>	<a href="#">Alvord chub</a>	River/Riparian	G2
<i>Acupalpus punctulatus</i>	<a href="#">Marsh ground beetle</a>	River/Riparian	G2
<i>Fisherola nuttalli</i>	<a href="#">Shortface lanx (=Giant Columbia River limpet)</a>	River/Riparian	G2
<i>Ivesia rhypara</i>	<a href="#">Grimy ivesia</a>	Rocky Outcropping	G2

\*Species links provided when available

All management recommendations assume that operators and land managers are following all applicable BMPs, laws, and regulations.